

TABELLA NUANCE *COLOR TABLE*

CONSULTARE LE INDICAZIONI IN BASSO

NOTES BELOW

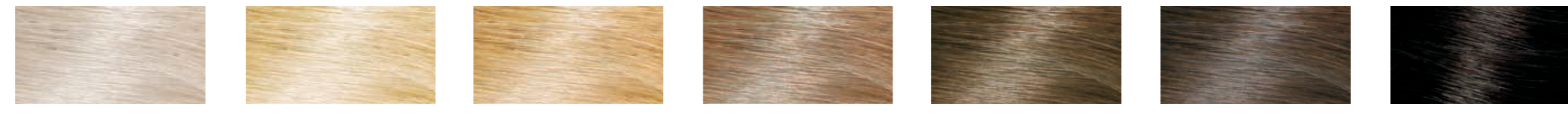


COLORE DI PARTENZA DEI TUOI CAPELLI

YOUR INITIAL HAIR



Senna / Cassia
Senna / Cassia



Biondo Dorato
Golden Hint



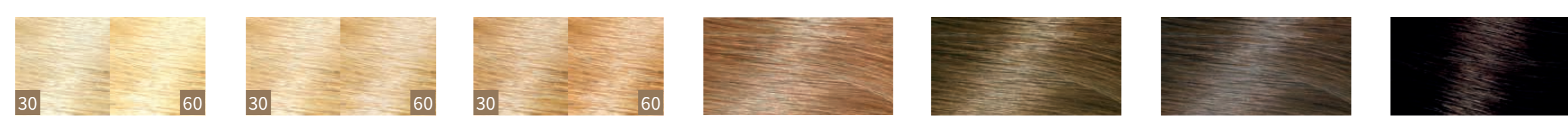
Biondo Chiaro
Light Blonde



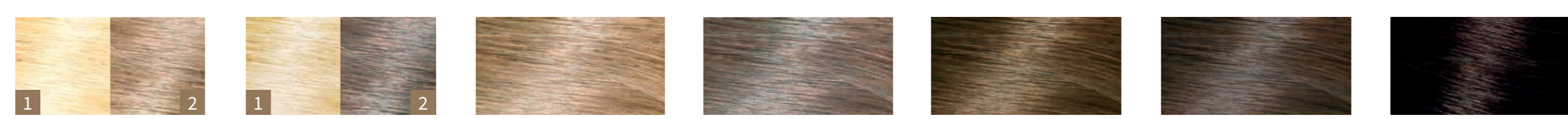
Biondo Sole
Sunrise



Biondo Medio
Medium Blonde



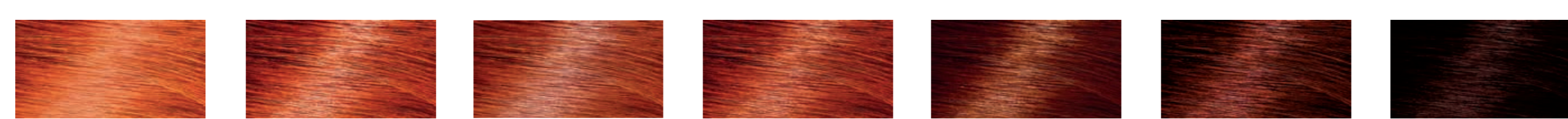
Biondo Scuro
Dark Blonde



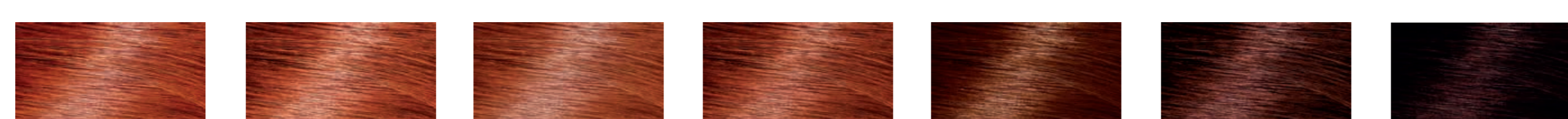
Rame
Copper



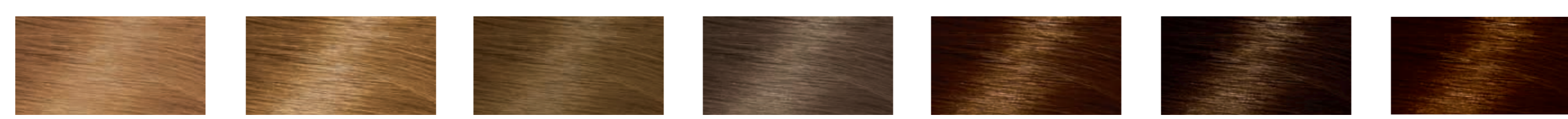
Henné Puro
Pure Henna



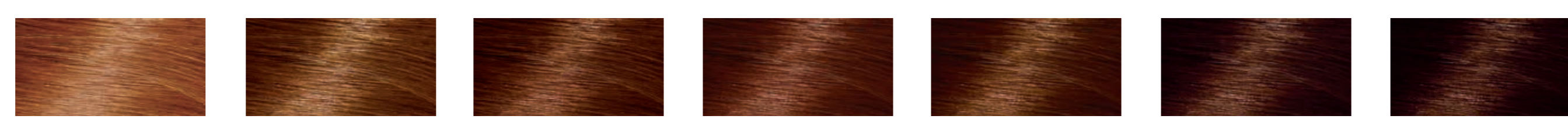
Henné, Amla & Jatropha
Henna, Amla & Jatropha



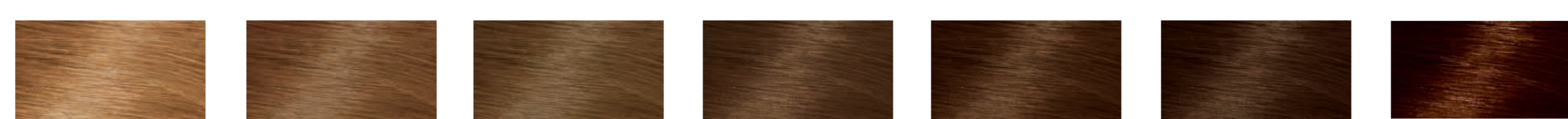
Castano Dorato
Golden Brown



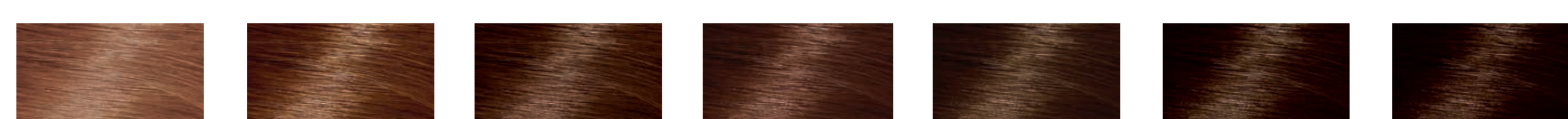
Castano Chiaro
Light Brown



Castano Medio
Medium Brown



Castano Nocciola
Natural Hazel



Castano Cenere
Ash Brown



Castano Scuro
Dark Brown



Nero
Black



Indaco Puro
Pure Indigo



- 1 Passaggio 1: Pre-colorazione (vedi tabella)
Step 1: Pre-coloring (see table below)
- 2 Passaggio 2: Colorazione con la nuance prescelta
Step 2: Coloring with the selected shade

30 = Tempo di posa 30 minuti
30-minute exposure time

60 = Tempo di posa 60 minuti
60-minute exposure time

La nuance khadi da te prescelta:

Se è consigliata una pre-colorazione (vedere numerazione immagini), utilizzare la seguente nuance khadi:

Castano Cenere khadi	Biondo Dorato khadi
Castano Scuro khadi	Henné Puro khadi
Nero khadi	Henné Puro khadi
Indaco Puro khadi	Henné Puro khadi
Biondo Scuro khadi	Biondo Dorato khadi

Your selected khadi shade:

If pre-coloring is recommended (see image numbering), use the following khadi shade:

khadi Ash Brown	khadi Golden Hint
khadi Dark Brown	khadi Pure Henna
khadi Black	khadi Pure Henna
khadi Pure Indigo	khadi Pure Henna
khadi Dark Blonde	khadi Golden Hint

Attenzione: il risultato della colorazione dipende sempre dal colore di partenza dei tuoi capelli, dalla struttura specifica del tuo capello e dal tempo di posa.

Please note that the results depend on your initial hair color, your individual hair structure and the exposure time.